

EnDAR: Environmental Database for Acquisition and Reporting



Powerful Data Management to Analyze and Resolve Environmental Issues

Developed by scientists and engineers with a strong understanding of monitoring programs and their associated data management needs, EnDAR more efficiently, accurately, and easily enables users to collect, import, store, report, and manage environmental data.

- Ensure easy access to complete, high-quality data
- Efficiently and accurately manage environmental data
- Reduce the cost of data management
- Streamline and improve sample planning and field data collection
- Validate data with automated quality control checks
- Use data-driven insights to make decisions and plan operations that optimize future outcomes
- EnDAR is non-proprietary with no annual license fees

System Components

SQL Server Database that securely manages and processes Electronic Data Deliverables (EDDs) and provides visual feedback and a full history of all records.

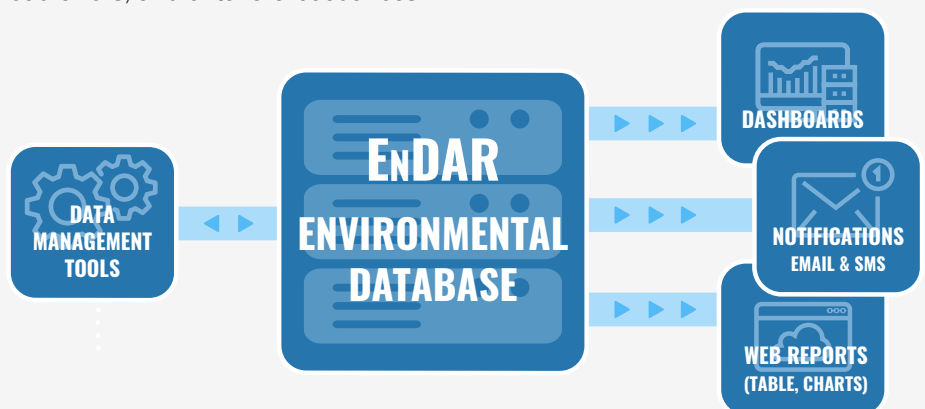
Customizable Data Visualization Dashboards enable interaction, analysis, reporting, and data exports for reports, presentations, and use with other software systems.

Data Manager desktop program supports project data management, including data entry, editing, search, and maintenance. **Sample Planner**, part of Data Manager, supports planning of routine and special sampling events using predefined and project-specific analysis plans.

Mobile Sampling Application enables field data collection and recording via a web-based format as well as a mobile app.

Automated Notifications by email or text alert users about system events, such as data upload confirmation, upload errors, and criteria exceedances

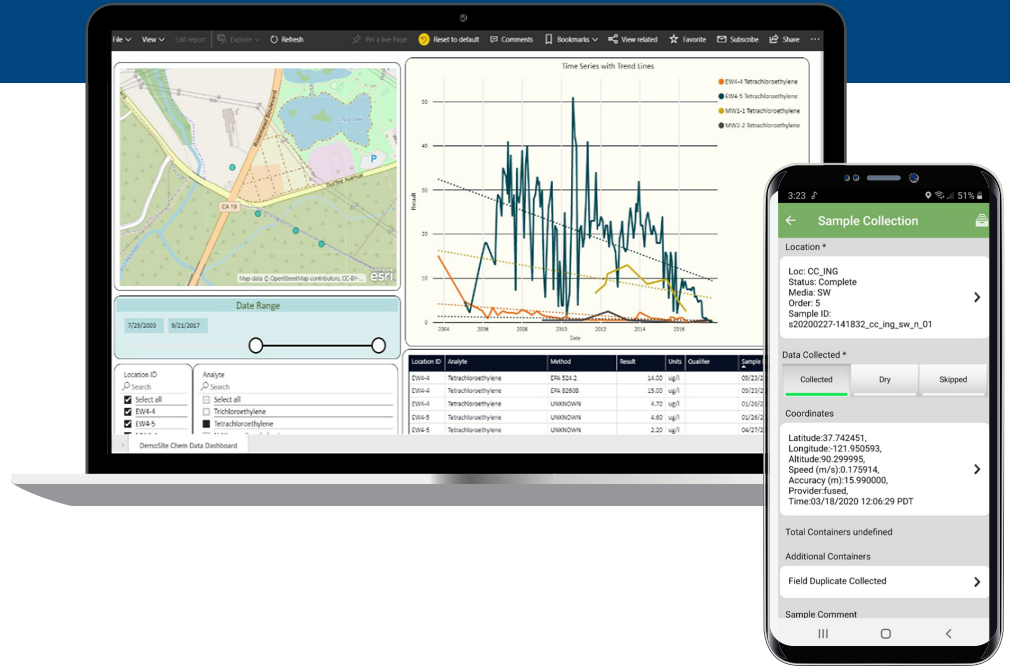
Automated Remote Monitoring Import captures and stores high-frequency data from remote monitoring systems and support automated online weather data downloads.



Get Started with EnDAR

Reconfigure > Recreate

Every project is different, but that doesn't mean having to start from scratch. EnDAR provides a base system from which to easily and efficiently configure data to meet specific program needs. With prebuilt tables, automated quality checks, and user-friendly outputs, EnDAR lowers the cost of scientific data management and brings more insights within reach.



Features and Benefits

Complete Environmental Chemistry Database: Laboratory analysis, water levels, lithology, well construction, field parameters, and toxicity.

Flexible, Expandable, and Customized Solutions designed with flexibility and expandability to meet each client's needs and budget.

- Add new database tables and/or fields with no software code or configuration changes
- Expand to adopt specific import/export formats, provide custom reports, and incorporate R scripts or other data analysis tools

Better Data Quality and Accessibility: EnDAR significantly improves data quality and accessibility to mitigate data entry errors, maintain data integrity, reduce time spent finding and fixing errors in EDDs, maintain a history of all changes, and support complete data entry traceability.

Data-Driven Action: Customizable dashboards integrate, display, and analyze data to give users insight into making decisions and planning operations that optimize future outcomes.

High Security Storage: Data is securely stored in SQL Server database either hosted by Tetra Tech or deployed to a client's private server and users have secure accounts with specific permissions.



EnDAR in Action

Data Management for Coordinated Integrated Monitoring Programs

EnDAR system is being used for sampling at the Upper Santa Clara River Watershed and the North Santa Monica Bay Coastal Watersheds. Sampling is performed across various water bodies to assess compliance with total maximum daily loads during both wet and dry conditions. Data is exported from EnDAR in California Environmental Data Exchange Network format and reported to the Water Board every six months. A custom data dashboard allows analysis of sampling data, including chemistry, field parameters, habitat, toxicity, and bacteria, to inform remediation efforts.



A Trusted Data Management Solution for 20+ Years

Contact Tetra Tech to explore setup options that meet project-specific needs and requirements.

Christine Lew
christine.lew@tetrattech.com
+1 (925) 280-7426
3746 Mt. Diablo Blvd.
Suite 300 | Lafayette, CA 94549
<http://rd.tetrattech.com>